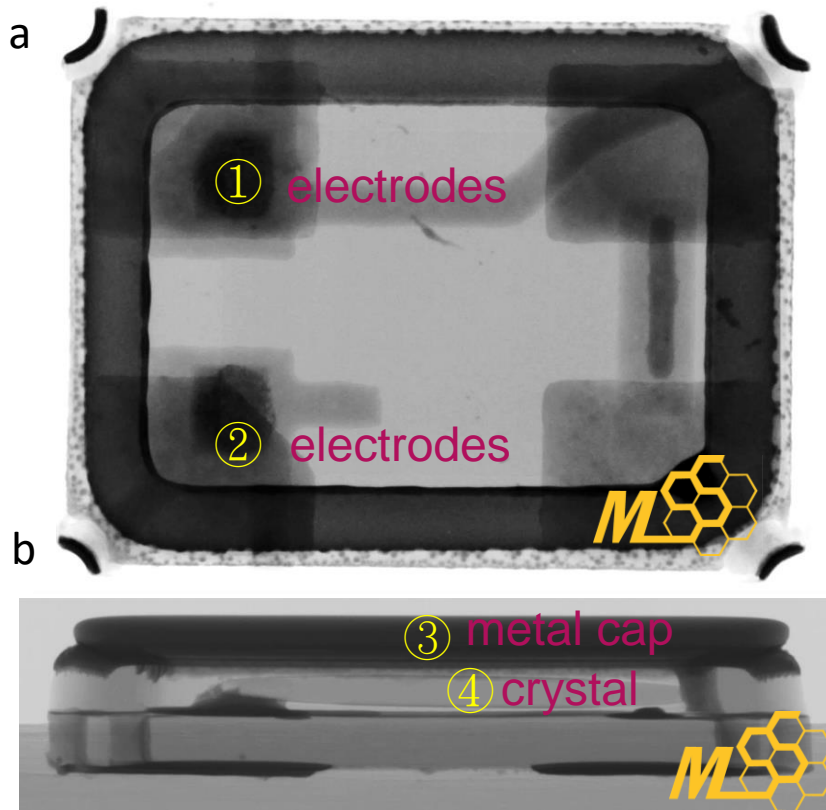
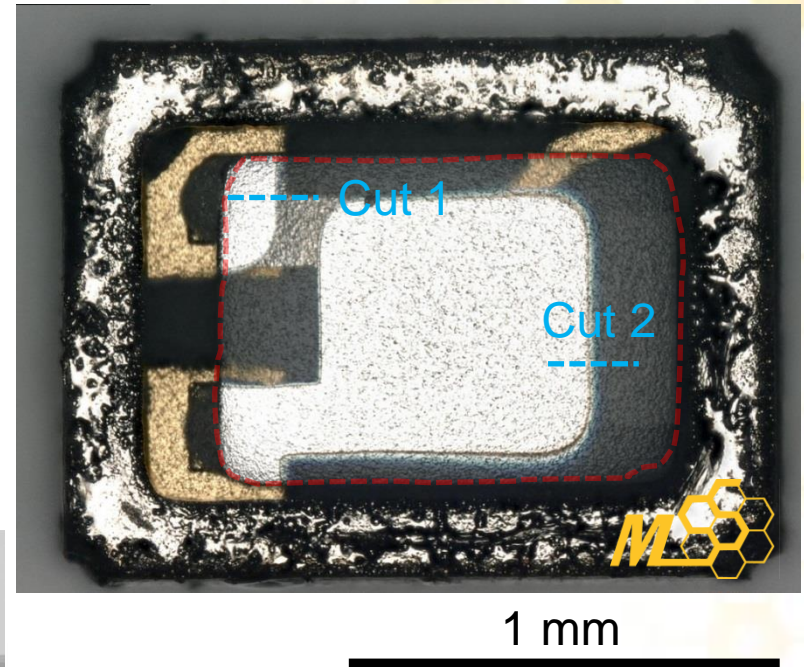


The crystal of interest demounted from a purchased iPad mini, T240 Ma94. a-c are sequent zoom-in OM images taken from the iPad mini.



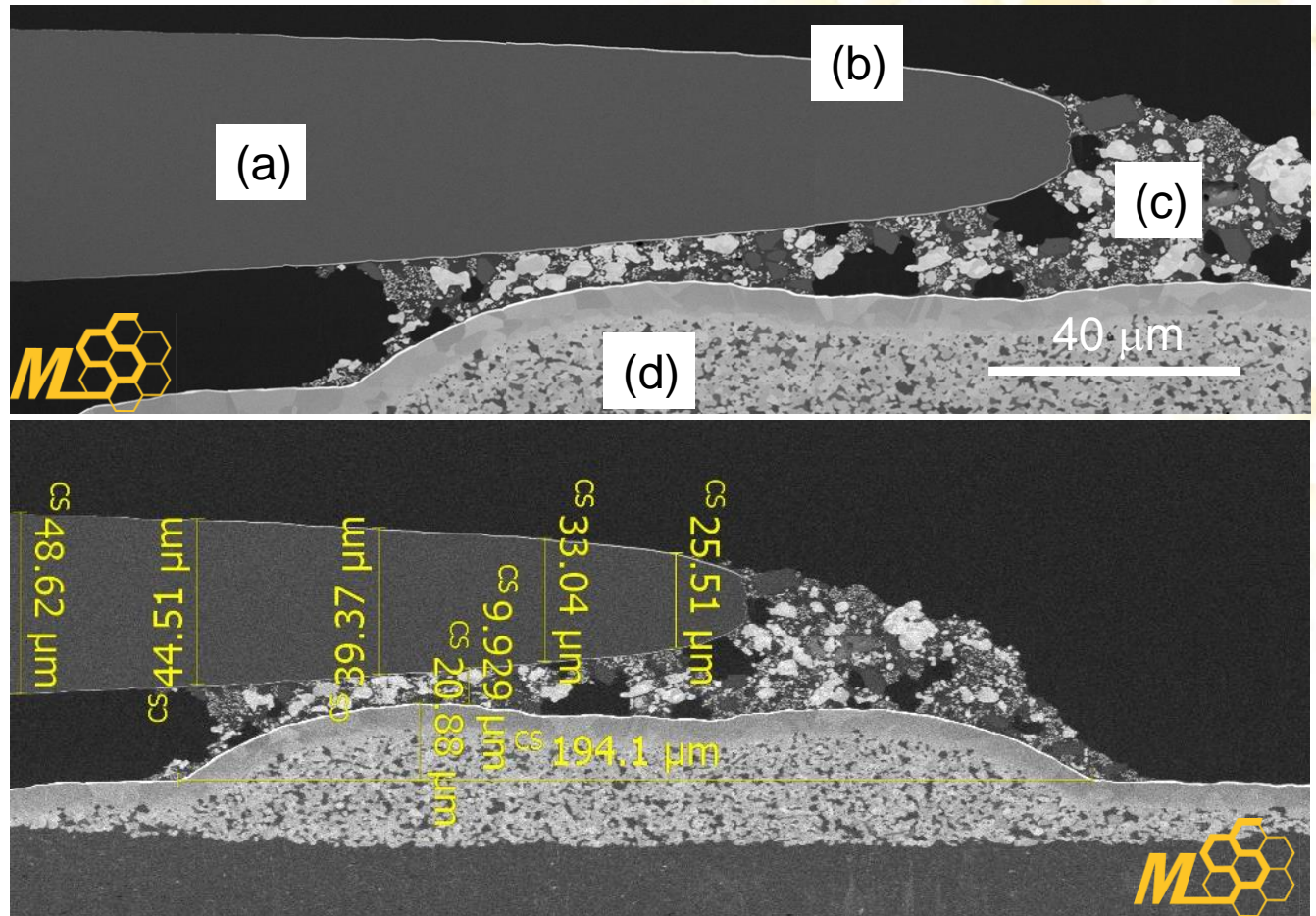
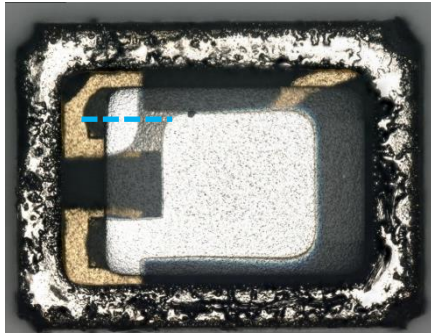


c OM image of the crystal



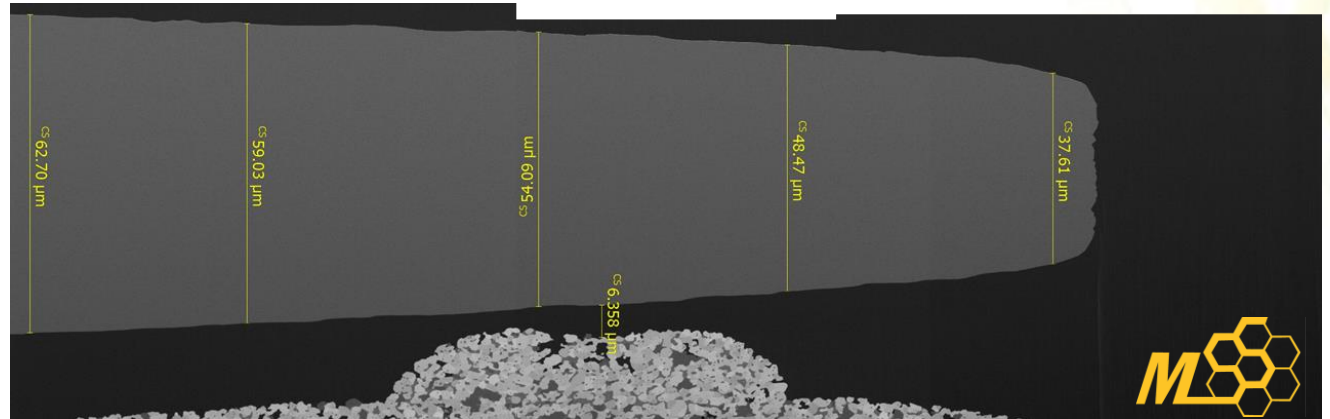
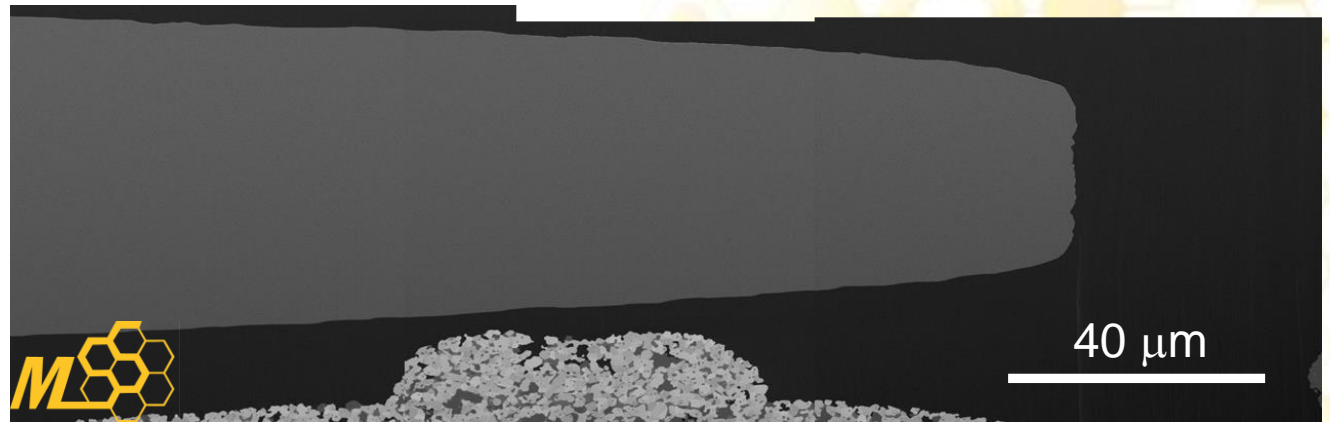
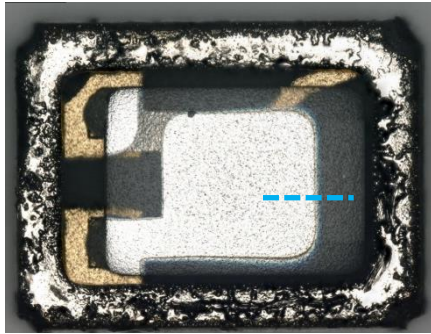
Planar (a) and cross-sectional (b) X-ray images of the crystal before decapsulation. ① and ② are electrodes, ③ is the metal cap, and ④ is the crystal. c OM image of the crystal, marked by a red-dotted line, after decapsulation.

Cut 1



Upper-right image exhibits PFIB results of the Cut 1 (sky-dotted line), (a) is the crystal, (b) is the metallic thin film coated on the crystal surface, (c) is the silver glue, and (d) is the package material. Calibrated dimensions of interested are also addressed in the bottom-right image.

Cut 2



Upper-right image exhibits PFIB results of the Cut 2 (sky-dotted line). Calibrated dimensions of interested are also addressed in the bottom-right image.